



Manufacturer of Automatic Sash Positioning System,
Down Draft Tables, Custom Fume Hoods and Slot Exhausters.

Custom Fume Hoods

Don't squeeze your equipment into a conventional fume hood. Have a **NEW-TECH** fume hood built for your equipment.

**Any Size, Shape, Configuration
and Material.**



NEW-TECH has produced fume hoods as large as 25' wide, 14' high and 8' deep.



New-Tech™, a division of Zeigler Enterprises, Inc.

(866) 631-8324

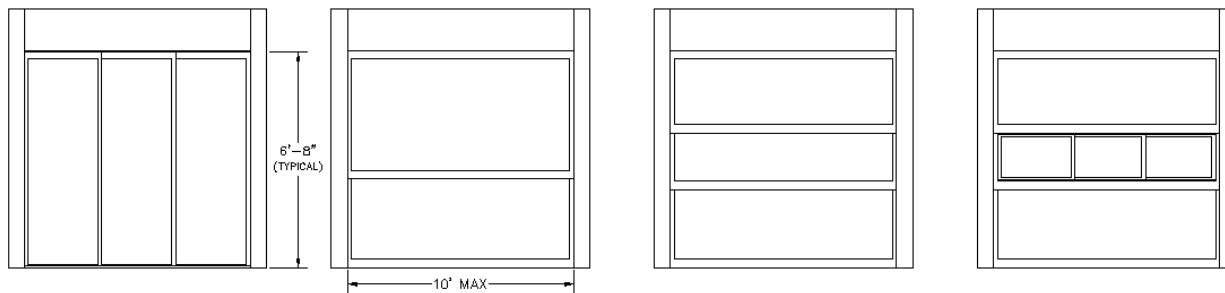
www.newtechtm.com

PO Box 1944

Midland, MI 48641-1944

Custom Fume Hoods

– Just a few examples of sash configurations –



Horizontal Sliding Doors:

Three full framed doors hanging in three tracks.

Dual Overlapping Sash:

The bottom sash is sized to the working height of the equipment.

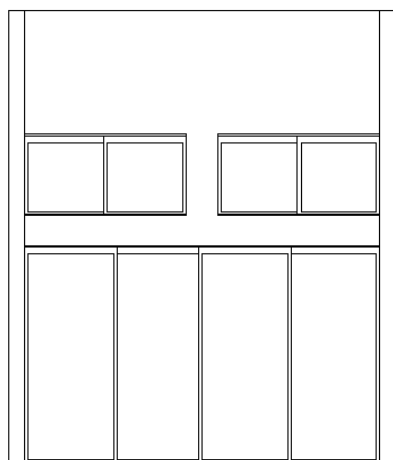
Triple Overlapping Sash:

Middle sash added for minimal opening while working on equipment

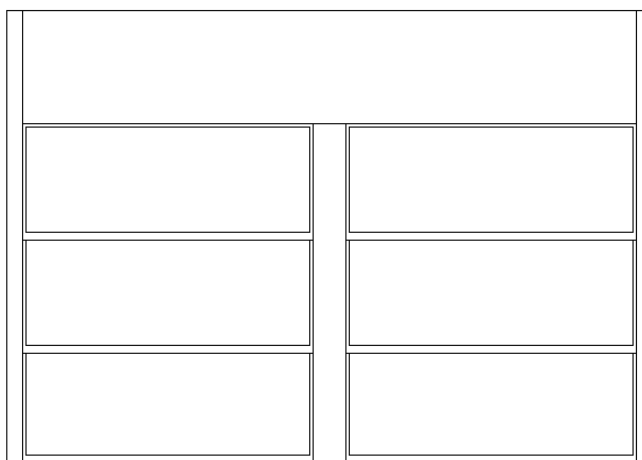
Combination Triple Overlapping Sash:

Middle sash incorporates three horizontal sliding doors for added safety.

– Two or more sashes based on fume hood width –



Maximum access to Equipment,
Minimal open area (exhaust required)



Dual Triple Overlapping sash with removable centerpost
for unrestricted equipment changeout access

Options

- Liner Materials:
 - Epoxy-painted cement board
 - CR-900 PolyResin Chemblock fume hood liner (white)
 - Type 304 Stainless Steel
 - Type 316 Stainless Steel
- Superstructure – Exterior Finish:
 - Plastic laminate
 - Chemical resistant plastic laminate
 - PolyResin (white)
 - Type 304 Stainless Steel
 - Type 316 Stainless Steel
- Receptacles – multiple combinations of:
 - Single phase – 125V, 250V, 277V
 - Three phase – 208V, 250V, 480V
 - Standard and Twistlock
- Lighting:
 - Standard exterior mounted two bulb florescent
 - Optional – Interior incandescent
 - Optional – Interior explosion proof florescent
 - Optional – Interior explosion proof incandescent
- Equipment Lattice:
 - Fiberglass (solid)
 - Solid type 304 Stainless Steel
 - Solid type 316 Stainless Steel
 - Solid aluminum
- Power Cord & Tubing Pass-thru Tubes
- Custom Equipment Carts
- Side Pocket or Rear Counter Weights using Extra-Flexible Stainless Steel 7X19 Aircraft Cable

New-Tech™, a division of Zeigler Enterprises, Inc.

(866) 631-8324

www.newtechtm.com

PO Box 1944

Midland, MI 48641-1944